

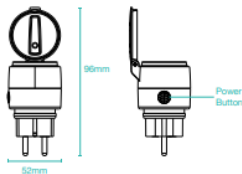
## Features

- Wi-Fi & Bluetooth Connection
- No Hub Required
- Remote Control
- Overload Protection
- Voice Control
- Timer & Schedule
- Grouping
- Waterproof IP44

## Parameters

Electrical Rating	AC220-240V, 50/60Hz, 8-FA-load 2000W (general use)
Working Temp.	-20~35°C
Wi-Fi Protocol	2.4GHz Only
Wi-Fi Standard	IEEE 802.11b/g/n
Bluetooth Protocol	4.2
Bluetooth Standard	IEEE 802.15.1b/g/n

## Structure Introduction



## Download App

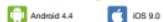
1: Search "Tuya Smart" from App store or Google play.



2: Scan the QR code from the label or user manual.

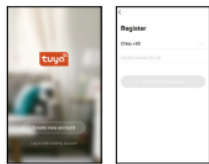


The APP is compatible with Android 4.4 and IOS9.0 and higher version.



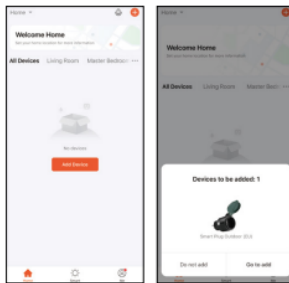
## Log In / Register Account Number

Open the Tuya Smart APP, sign up for a new account or log in with an existing account.



## Quick Mode Configuration

Power the Smart Plug on and enter the home of the APP while ensuring Bluetooth is on and the Wi-Fi signal is good and stable. The switch indicator light will flash when turning on the power supply. Stay at the home page and find the push notification, then click "Go to add". Note: If the indicator light is not blinking, please press and hold the power button on the Smart Plug for 6 seconds until the indicator light blinks rapidly.



Stay on the Home Page

Push Notification

## Select Wi-Fi Network

Select the Wi-Fi connection to the smart device, input the Wi-Fi password, and then click "Next" to wait for the matching to succeed. (Make sure smart devices share the same Wi-Fi, the network must be 2.4GHz)

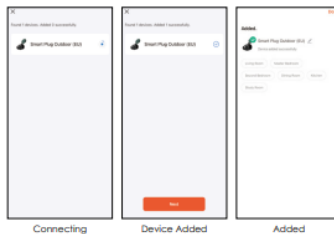


Enter/Confirm Wi-Fi Password

## Add Successfully

The interface of connecting will appear, when the device is found, the indicator light will stop blinking, and then initializing device will be complete.

The Smart Outdoor Plug is added once they are communicating on the same Wi-Fi network. You can rename the smart device by clicking on the pencil icon. Press the "Done" button at the bottom of the screen to continue to the next step.



Connecting

Device Added

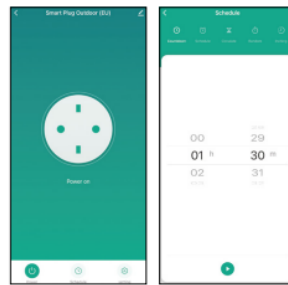
Added

## Control Device

Control the Smart Plug from different locations using your mobile data or another Wi-Fi connection.

## Countdown

Click the "Schedule", you can choose the length of countdown time from 0 to 23 hours and 59 minutes. If the Smart Plug is on when the countdown starts, the Smart Outdoor Plug will turn itself off at the end time.



Control Device

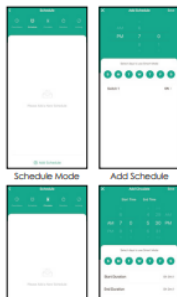
Countdown

## Schedule Mode

Click "Schedule" then you can set up multiple schedules for the same plug, such as turning a light on at one time and off at another.

## Circulate Mode

Under this function, the Smart Outdoor Plug will turn itself ON/OFF at several time nodes set by you with an adjustable cycling program.



Schedule Mode

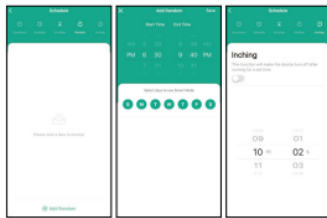
Add Schedule

## Random Mode

Tap "Random" to enter the control panel of Random Mode, then choose the Start/End Time. In his mode, the Smart Plug will turn itself ON/OFF at a random time point which varies from 30mins before pre-set Start/End Time to 30mins after pre-set Start/End Time.

## Inching Mode

Enabling this feature will put the device in an automatic state. Each time the device is switched on, it will automatically switch off after a set period of time.



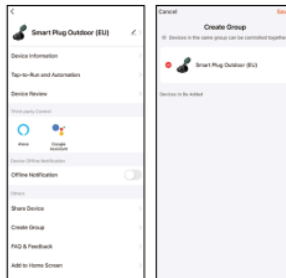
Random Mode

Random Mode

Inching Mode

## Create Group

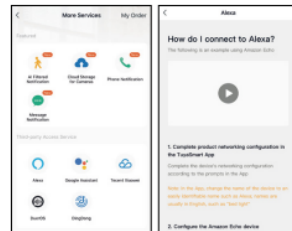
If you got two or more Smart Plugs, please tap "Z" at the upper right corner of the control panel and create a group. The Smart Group will realize synchronous switch, color changes, scene mode selection, timer, etc.



## Third Party Control

In the Tuya Smart APP: Find more services in the "Me" menu, click to enter "voice service" (Alexa/ Google Assistant) and other services, click on the service you need.

Connect to the third-party service device according to the operation guide.



For any product and APP updating, please contact with customer service.

## Caution

- To ensure a safe and steady operation, do not exceed the listed power range.
- Risk of electric shock. Grounding continuity must be maintained.
- Don't use where directly exposed or submerge to water.
- Do not operate or store this product close to any source of heat, combustible or flammable materials.
- Place the device out of reach from children.

## Trouble Shooting

Q: How to set indicator light as rapid flashing?  
1. Power on device power off after 10s and then power on.  
2. Hold the reset button for 5s.  
3. Confirm indicator light is now rapidly flashing.

Q: How to set indicator light as slow flashing?  
1. Power on device power off after 10s and then power on.  
2. Hold the reset button for 5s.  
3. Confirm indicator light is now rapidly flashing.  
4. Hold reset button for 5s until indicator light is slowly flashing.



## Smart Outdoor Plug TRIBERG

