

说明书：风琴折， 尺寸:105x130mm, 材质：128g铜版纸 哑膜， 颜色：彩色

# eSmartCam USER MANUAL

## 1 Download App

Download App 'eSmartCam' from 'App Store' or 'Google Play' or scan the QR code as attached (Fig. 1):



Fig. 1

## 2 Register account and login (Fig. 2 & 3).



Fig. 2



Fig. 3

## 3 Reset

If the camera was used with other account, please reset it. Reset button is at the bottom OR rear of camera. Insert reset pin and press it for 3 seconds. After hearing continuous buzzing 'be-be', it will run automatically and have a sound 'dong-dong' which means reset successfully (Fig. 4).

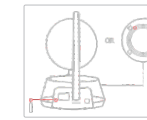


Fig. 4

## 4 Login and link configuration

For the first time you log in or reset, the App will remind you to add camera. The camera will sound short 'be-be' alarming which means you can start connection. We have three ways for connection: smart link, QR code configure, LAN configure. (Fig. 5 & 6)

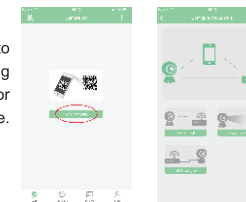


Fig. 5

Fig. 6

**NOTE:** Please make sure use 2.4G Wi-Fi for connection.

## 4.1 Smart Link

Input Wi-Fi name & password. After 'ding-dong' and continuous buzzing 'be-be', it means successful connection.(Fig. 7 - 12)

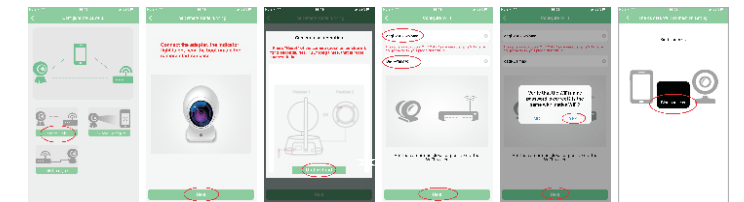


Fig. 7

Fig. 8

Fig. 9

Fig. 10

Fig. 11

Fig. 12

## 4.2 QR code configure

Choose QR code configure and input Wi-Fi name & password. A QR code will be created and shown on screen. Put your smart phone 20-30cm near to camera and scan QR code by lens. After 'ding-dong' and continuous buzzing 'be-be', it means successful connection. (Fig. 13 - 20)

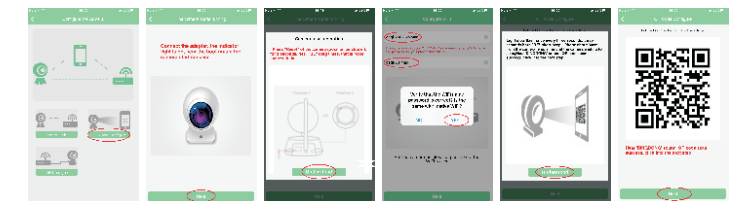


Fig. 13

Fig. 14

Fig. 15

Fig. 16

Fig. 17

Fig. 18



Fig. 19

Fig. 20

## 4.3 LAN configure

Connect camera with LAN cable under the same network as smart phone. After camera ringing 'Ding-ling', choose it from the list (Fig. 24) and confirm to connect it (Fig. 25).(Fig. 21 - 25)

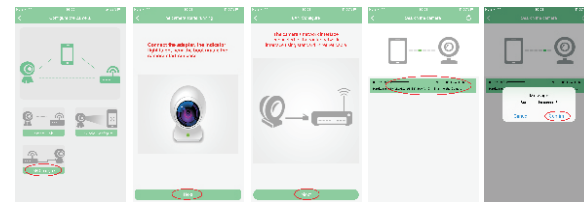


Fig. 21

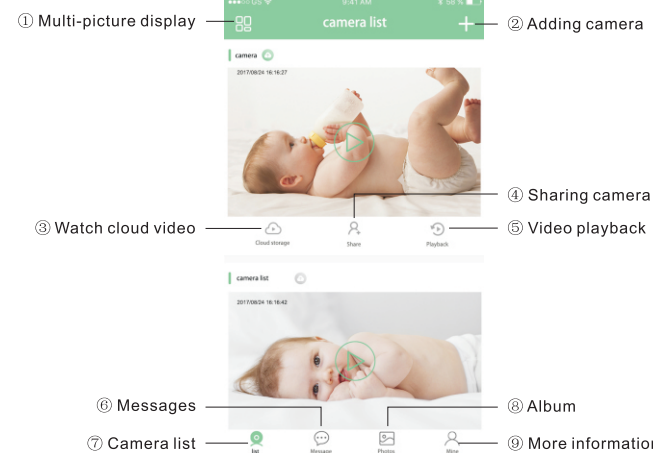
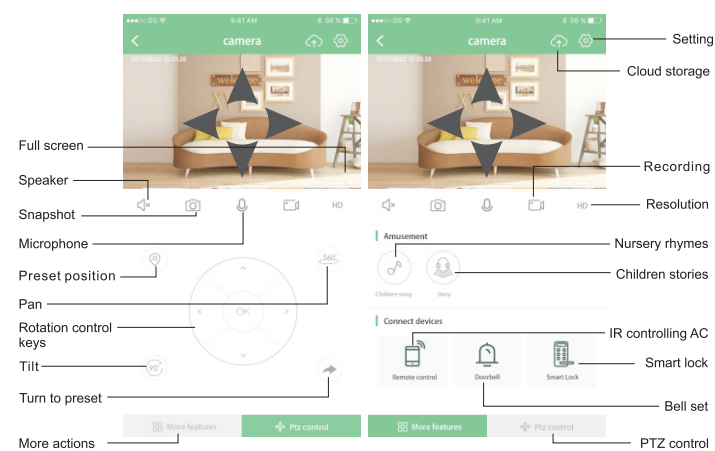
Fig. 22

Fig. 23

Fig. 24

Fig. 25

## 5 The instructions of icons on App



- ① Click it to view multiple cameras (support max 4 cameras in one screen).
- ② Click it to add/connect more camera(s).
- ③ Click to watch cloud video
- ④ Share the camera to other user account(s). If you don't want to share, select the account and slide left to delete it.
- ⑤ Click it to check video playback in TF card.
- ⑥ Pushing pictures from motion/cry detection and sub-account access records is here.
- ⑦ Click it back to camera list.
- ⑧ Snapshot and video clip is here.
- ⑨ Click it for more information such as version number, user video instruction etc.

\* The pictures are only for reference. There may be slight differences for different cameras. Please refer to the actual App interface.

## Warranty Card

Product Model No.		Purchase Date	
Product Name		Invoice No.	
Factory Serial No.		Customer Name	
Purchase Store		Customer Phone	

## Warranty Policy

Thanks for using our product. To obtain better service, please read the following clauses and keep this warranty card properly.

## Warranty

1. We provide \_\_\_ months limited warranty.
2. We do not replace or refund any sold products except for quality problem.

## Disclaimers

- This warranty does not cover the following cases:
1. Man-made surface corruption, break, distortion, or damages due to improper installation, and maintenance.
  2. Connecting port is distorted or cracked; PCB is distorted, cracked, damaged or burned; chip is severely burned.
  3. The warranty period has expired.
  4. Products repaired by unauthorized service provider or personnel, or disassembled by users.

CE FC RoHS  
ISO 9001:2008

Made in China

